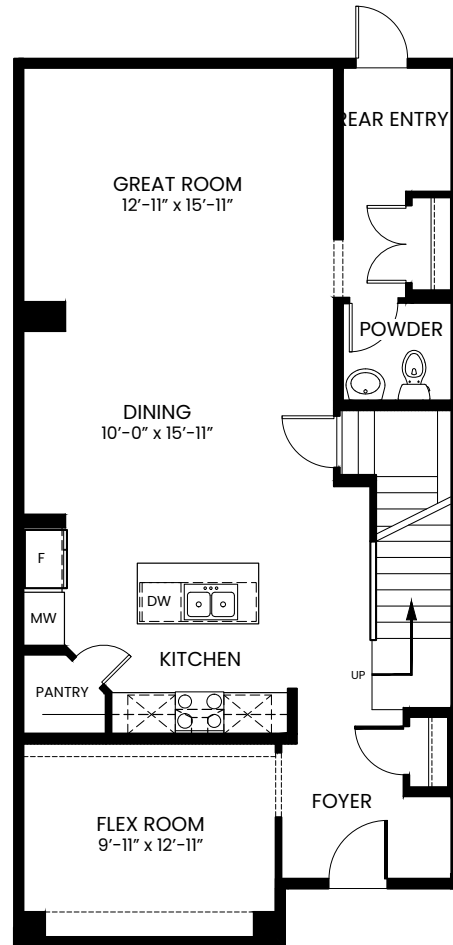
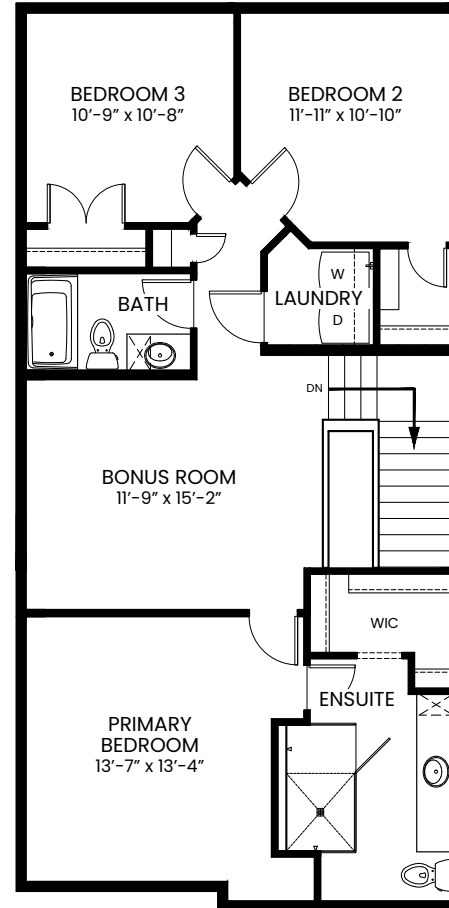


## WESTWICK

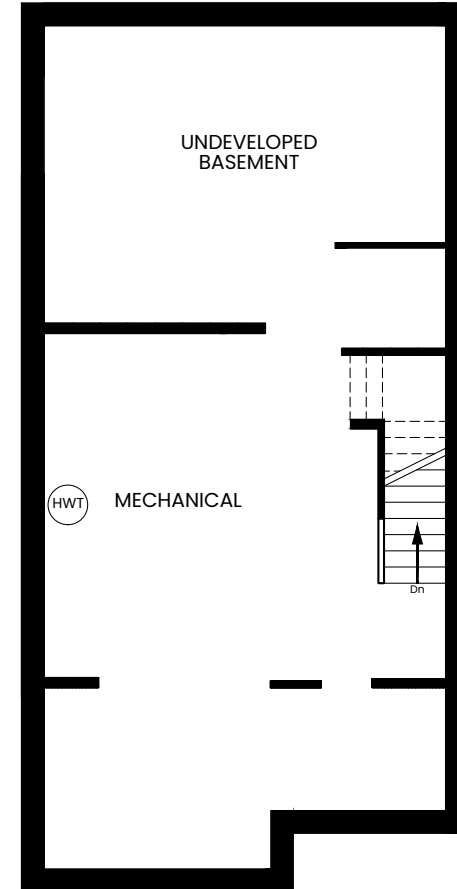
3 Bed + 2.5 Bath  
2,102 sq. ft.



MAIN - 1,025 SF



UPPER: 1,077 SF



LOWER: 935 SF  
UNFINISHED BASEMENT

The Developer/Builder reserves the right to make modifications or substitutions to building design, specifications, features, plans, options, materials and drawings before or after a Disclosure Statement is filed. Any measurements provided are approximate only. Renderings shown (interior and exterior) are for general illustration purposes only and should not be relied upon to accurately represent the actual final product. E.&O.E.